

\$145,000 - 211 4304 139 Avenue, Edmonton

MLS® #E4444627

\$145,000

2 Bedroom, 2.00 Bathroom, 1,047 sqft
Condo / Townhouse on 0.00 Acres

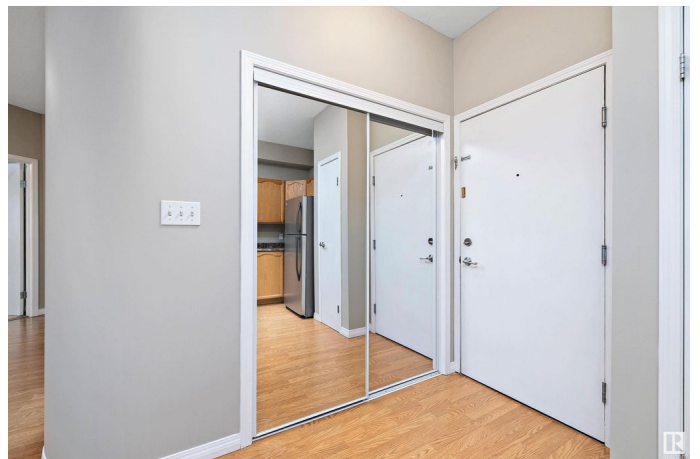
Clareview Town Centre, Edmonton, AB

Beat the summer heat with central air conditioning and skip shoveling snow with heated underground parking! This well-kept 2 bedroom, 2 bathroom condo with secured underground stall offers incredible value just steps from Clareview LRT station and Manning Drive. With 1,046 SqFt of bright, open-concept living space, itâ€™s perfect for first-time buyers or investors. Freshly painted and move-in ready, this unit features 9â€™™ ceilings, a spacious kitchen with ample cabinetry, 5 appliances (including brand new fridge & stove), and convenient in-suite laundry. The primary bedroom includes a walk-in closet and private 4-piece ensuite. Relax on your bright South facing balcony with a gas line for BBQs, and enjoy access to the recreation centre with a fully equipped gym, studio/social room, billiards, and table tennis. Condo fees include car wash, heat, water, professional managementâ€™™and even your gym membership. Immediate possession availableâ€™™donâ€™™t miss this opportunity!

Built in 2006

Essential Information

MLS® #	E4444627
Price	\$145,000
Bedrooms	2



Bathrooms	2.00
Full Baths	2
Square Footage	1,047
Acres	0.00
Year Built	2006
Type	Condo / Townhouse
Sub-Type	Lowrise Apartment
Style	Single Level Apartment
Status	Active

Community Information

Address	211 4304 139 Avenue
Area	Edmonton
Subdivision	Clareview Town Centre
City	Edmonton
County	ALBERTA
Province	AB
Postal Code	T5Y 0H6

Amenities

Amenities	Air Conditioner, Intercom, Parking-Visitor, Recreation Room/Centre, Social Rooms
Parking	Underground

Interior

Appliances	Dishwasher-Built-In, Microwave Hood Fan, Refrigerator, Stove-Electric, Washer
Heating	Forced Air-1, Natural Gas
# of Stories	4
Stories	1
Has Basement	Yes
Basement	None, No Basement

Exterior

Exterior	Wood, Stucco
Exterior Features	Fenced, Landscaped, Playground Nearby, Public Transportation, Schools, Shopping Nearby
Roof	Asphalt Shingles
Construction	Wood, Stucco

Foundation Concrete Perimeter

Additional Information

Date Listed June 27th, 2025
Days on Market 3
Zoning Zone 35
Condo Fee \$713

DATA IS DEEMED RELIABLE BUT IS NOT GUARANTEED ACCURATE BY THE REALTORS® ASSOCIATION OF EDMONTON. COPYRIGHT 2025 BY THE REALTORS® ASSOCIATION OF EDMONTON. ALL RIGHTS RESERVED.Trademarks are owned or controlled by the Canadian Real Estate Association (CREA) and identify real estate professionals who are members of CREA (REALTOR®, REALTORS®) and/or the quality of services they provide (MLS®, Multiple Listing Service®)
Listing information last updated on June 30th, 2025 at 8:02am MDT