

## \$1,250,000 - 10416 Glenora Crescent, Edmonton

MLS® #E4431950

**\$1,250,000**

5 Bedroom, 2.50 Bathroom, 2,831 sqft

Single Family on 0.00 Acres

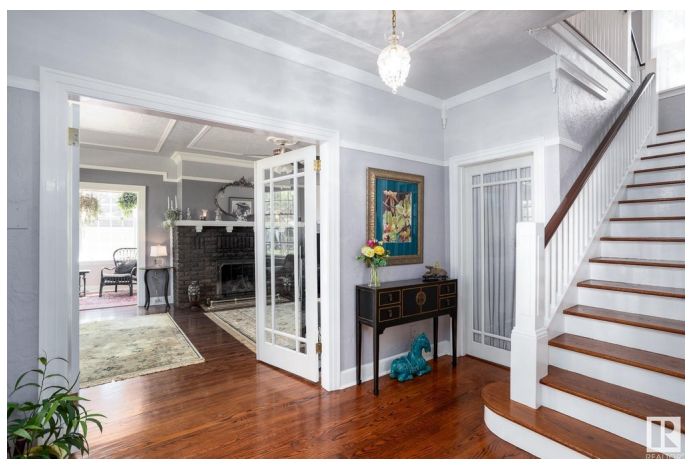
Glenora, Edmonton, AB

Classic 2.5 storey Georgian Revival home in Old Glenora - one of Edmonton's finest neighbourhoods. 5 bedrooms, 2.5 baths with fully finished basement. Spacious front hall & foyer, formal DR, very large LR with beautiful original fireplace (converted to gas), sunroom off LR, kitchen with bay-window eating area, main floor den/office. 2nd floor features 3 bedrooms - huge MBR with full dressing room and access to 3 season sunroom. 3rd floor has 2 bedrooms and space for an additional bath. Hardwood flooring on main(oak) and second (maple), with hemlock on 3rd floor. Very private (no adjacent neighbours), fenced back yard with deck. Spacious 13 year old 24 X 26 garage with plenty of room for attic storage. RV parking. 1 block to future LRT stop, 1 block to Ramsey Ravine, close to schools, 5 min. to Downtown. In the same family since 1958. On City's inventory of Historic homes (no restrictions).

Built in 1933

### Essential Information

MLS® #	E4431950
Price	\$1,250,000
Bedrooms	5
Bathrooms	2.50
Full Baths	2



Half Baths	1
Square Footage	2,831
Acres	0.00
Year Built	1933
Type	Single Family
Sub-Type	Detached Single Family
Style	2 and Half Storey
Status	Active

### **Community Information**

Address	10416 Glenora Crescent
Area	Edmonton
Subdivision	Glenora
City	Edmonton
County	ALBERTA
Province	AB
Postal Code	T5N 3J7

### **Amenities**

Amenities	Air Conditioner, Ceiling 9 ft., Deck, No Animal Home, No Smoking Home, Smart/Program. Thermostat, Wood Windows
Parking Spaces	6
Parking	Double Garage Detached, Over Sized, Rear Drive Access, RV Parking

### **Interior**

Appliances	Air Conditioning-Central, Alarm/Security System, Dishwasher-Built-In, Garage Control, Garage Opener, Hood Fan, Oven-Built-In, Refrigerator, Stove-Electric, Water Softener, Window Coverings
Heating	Forced Air-2, Natural Gas
Fireplace	Yes
Fireplaces	Brick Facing, Glass Door, Insert
Stories	4
Has Basement	Yes
Basement	Full, Finished

### **Exterior**

Exterior	Wood, Stucco
Exterior Features	Back Lane, Fenced, Landscaped, Level Land, Paved Lane, Public Transportation, Schools

Lot Description	58 x 140
Roof	Asphalt Shingles
Construction	Wood, Stucco
Foundation	Concrete Perimeter

### **School Information**

Elementary	Glenora
Middle	Westminster
High	Ross Shepard

### **Additional Information**

Date Listed	April 21st, 2025
Days on Market	65
Zoning	Zone 11

DATA IS DEEMED RELIABLE BUT IS NOT GUARANTEED ACCURATE BY THE REALTORS® ASSOCIATION OF EDMONTON. COPYRIGHT 2025 BY THE REALTORS® ASSOCIATION OF EDMONTON. ALL RIGHTS RESERVED. Trademarks are owned or controlled by the Canadian Real Estate Association (CREA) and identify real estate professionals who are members of CREA (REALTOR®, REALTORS®) and/or the quality of services they provide (MLS®, Multiple Listing Service®)

Listing information last updated on June 24th, 2025 at 9:32pm MDT